

ARCHITECTURE / ENGINEERING / INTERIORS

ATF MEETING #1

RIVER VALLEY SCHOOL DISTRICT



River Valley
School District



FEH DESIGN

INTRODUCTION

- Continuous operation since 1898
- Offices in Dubuque, Des Moines, Sioux City, (Iowa) and Oconomowoc (Wisconsin)

Extensive experience throughout the Midwest

Certified Education Facility Planners

High quality design documents

High level of Principal involvement

- Design approach that focuses on the owner, staff, and community involvement



FEH DESIGN offers experience provided by our four offices including architecture, structural engineering, interior design, and LEED accredited professionals.

Review agenda and today's goals



03/ ADVISORY TASK FORCE ROLE

The Advisory Task Force serves as a sounding board, providing guidance, advice, and feedback to the School Board. Advisory Task Force members will gain knowledge of the facility needs and will be capable of articulating the views and vision of the community for the District. They understand the Goals for Success for the School District, can evaluate and prioritize possible implementation options, will consider the potential cost of proposed options, and make advisory recommendations to the School Board.



04 / DRAFT GOALS FOR SUCCESS

- Safety & Security for students & staff.
- Foster trust among communities.
- Facilities engage all students.
- Student & community resource – welcoming environment.
- Well-functioning learning spaces & libraries/media centers.
- Managing debt, financially sustainable.
- Access to current technology for all.
- Attract & retain students & families.
- Maximum efficiency & effectiveness.
- Support daycare/childcare opportunities.
- A process that engages all residents & communities.
- Utilize the natural resource assets available to the district.
- Leverage coordination with local business to meet local workforce needs & inspire all students.
- Support the performing arts through curriculum & partnerships.

05 / REVIEW THE PROCESS

SPACE NEEDS EVALUATION - DRAFT

- Compare existing to state standards
- Staff questionnaires and interviews
 - Special Education spaces (sensory classroom)
 - PE & wellness space
 - Career and technical education spaces
 - Early Learning Center Classroom space
 - Agriculture lab space
 - Updated restrooms
 - Staff restrooms
 - Performing Art space
 - Counselor space
 - MS Cafeteria
 - Classroom updates
 - Storage

river Valley School District - Plain Early Learning Center
Space Needs
2023-1-6 Enrollment: 3yr. Old Spec. Ed. - 4K - 5K, 104 Students

FEH DESIGN

Room #	Program	Area in SF		
		Existing	National Standards	Architect Recommended
Plain Early Learning Center				
101	Classroom - 4K			
102	Classroom - 4K			
	Toilet	85	1200	850
103	Classroom - 4K	0	60	60
103B	Storage	850	1200	850
103C	Restroom	0	60	850
104	Classroom - 5K	1348	1200	60
104B	Storage	81		1348
104C	Storage	34	60	60
105	OT/PT	1150	1200	60
106	Media/Library	74		1150
106B	Electric	80		74
106C	Storage	525	700	80
107	Main Office Secretary (275) Principal (150)	1078	1500	700
108	Classroom - 4K	78		1500
	Toilet	70		78
109	Classroom - 4K	225	425	70
	Toilet	279	1200	425
110	Classroom - 5K	0		279
	Toilet	385	60	60
111	Classroom - 5K	0	1200	385
	Toilet	886	60	1200
112	Classroom - 5K	0	1200	886
	Toilet	895	60	1200
113	Parcel Delivery	0	60	895
120	Gym/Art (Recommend moving Art to other room)	864	1200	60
	PE Storage	0	60	864
121	Vestibule	69	60	69
122	PE Storage	5719		60
123	HVAC	0	200	5719
124	Kitchen	84		200
125	Kitchen Office/Storage	379		84
126	HVAC	397		379
127	Custodial/Boiler	673	600	397
128	Vestibule	148		673
129	Corridor	184		148
130	Support	381		184
131	Restroom	84		381
132	Restroom	3385		84
133	Restroom	71		3385
134	Lounge	150		71
		25		150
		25		25
		162	200	25

05 / REVIEW THE PROCESS

SPACE NEEDS EVALUATION – STAFF INPUT

Space Needs		
<i>Overall</i>	Commons area in all buildings	
	Additional classrooms to reduce crowding	2
	Performing arts center / auditorium	19
	Additional storage for classrooms	5
	Conference rooms at each building	
	Space for nursing staff and supplies at each building	
	Collaborative areas for small group work	5
	Furniture for breakout spaces	
<i>High School</i>	Gymnastics practice space	5
	Larger welding shop with metals storage	2
	Space for specialty storage items	3
	AG - large animal facility and office	
	Auxiliary gym for batting cages	
<i>Middle School</i>	Replace Middle School building for more space	3
	Central commons space	
	Collaboration and small group spaces	9
	Outdoor learning spaces	2
	Larger staff lounge	2
	Larger middle school gym	2
	Art kiln room needed, update flooring and ventilation	
	Fitness room with exercise equipment	

05 / REVIEW PROCESS

FACILITY CONDITION ASSESSMENT

- ADA accessibility
 - Interior and Exterior Building
 - Accessible restrooms
 - Accessible playground
- Secure Entrances
- Exterior Door replacement
- Locker room updates
- Bus Lane replacement – HS
- Downspout drainage



05 / REVIEW PROCESS

CONDITION ASSESSMENT



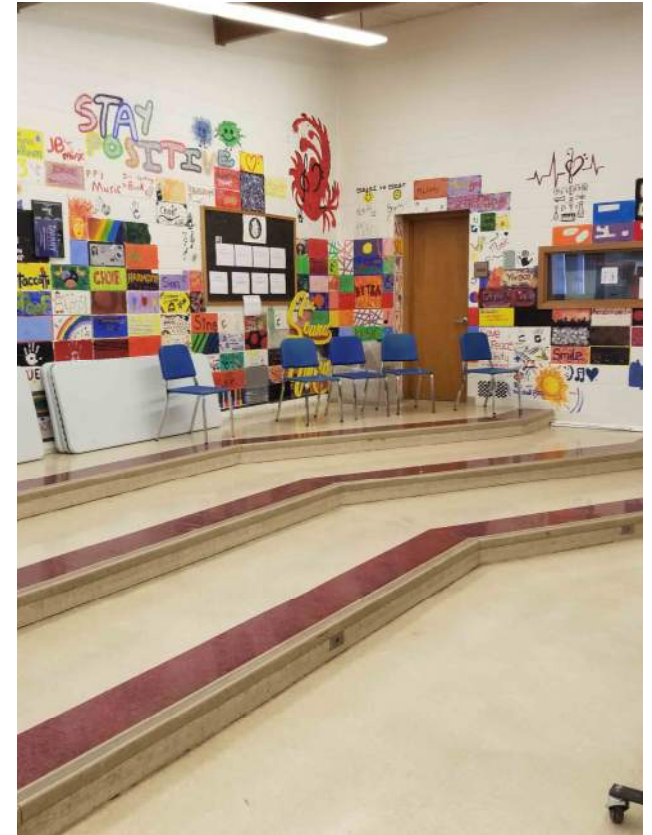
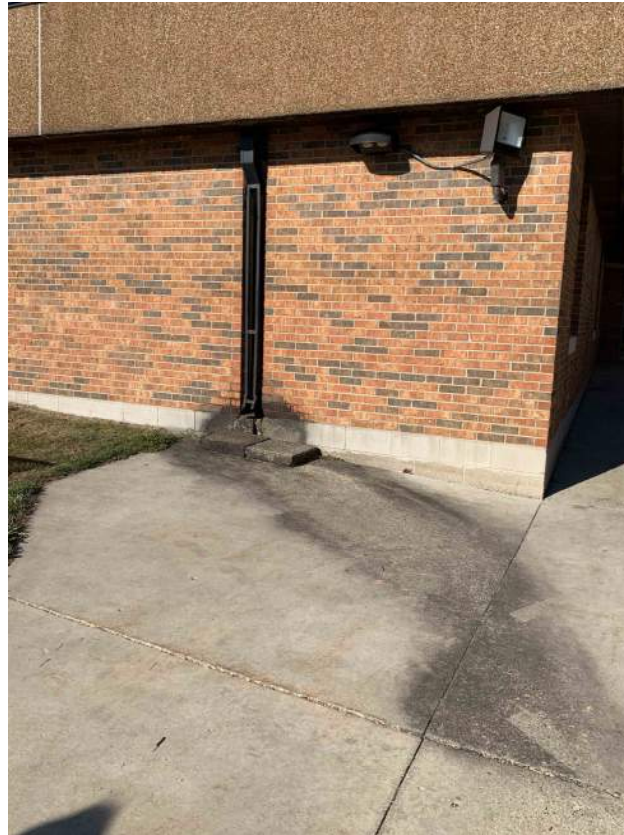
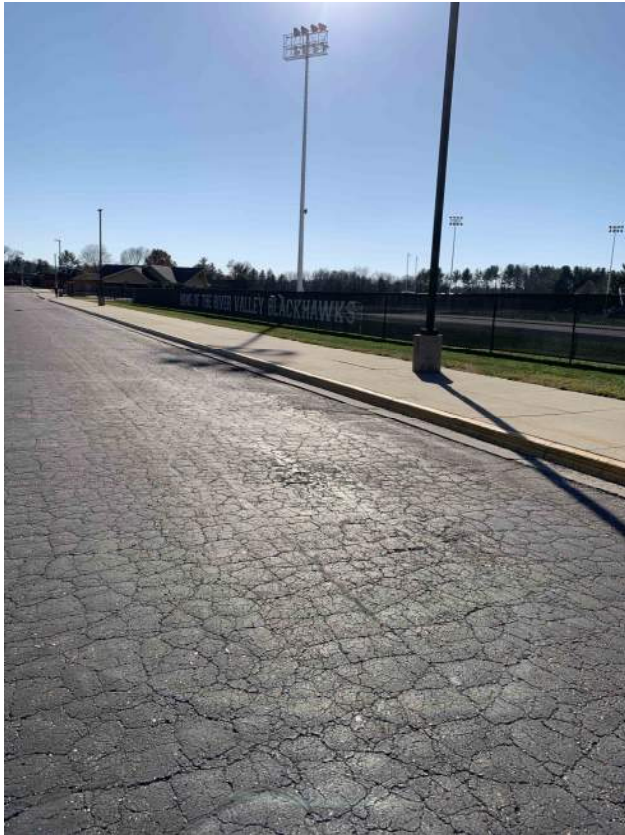
05 / REVIEW PROCESS

CONDITION ASSESSMENT



05 / REVIEW PROCESS

CONDITION ASSESSMENT



05 / REVIEW PROCESS

CONDITION ASSESSMENT



River Valley
School District



February 2, 2023

Facility Assessment Budgets Summary

	Early Learning Center	Elementary School	Middle School	High School	Total
Urgent	None	None	None	None	None
Required	\$ 210,000	\$ 200,000	\$ 1,760,000	\$ 2,250,000	\$ 4,420,000
Recommended	\$ 382,000	\$ 439,000	\$ 405,000	\$ 154,000	\$ 1,380,000
TOTALS	\$ 592,000	\$ 639,000	\$ 2,165,000	\$ 2,404,000	

TOTAL ASSESSMENT COSTS \$ 5,800,000

05 / REVIEW PROCESS

CONDITION ASSESSMENT

Facility Assessment Budgets

EARLY LEARNING CENTER (ELC)						
Item	Urgent	Required	Recommended	SCOPE	BUDGET	Notes
EXTERIOR						
1.			X	Exterior doors and frames rusting out Front entry most noticeable	\$ 7,000	Front entry only
2.			X	NE Stair settled on top, handrails exploding out concrete at stairs (1) stairs at east end of building - (12) stair corners at NE stair	\$ 25,000	Replace stairs and replace handrail with side mount style
3.		X		Playground Not ADA Accessible, needs path from building or parking lot to edge of play area and from edge of play area to the play equipment	\$ 10,000	Misc. concrete sidewalks throughout playground area. New rubber surface not included.
INTERIOR						
4.			X	Entrance is not secure Renovate adjacent classroom into office space and existing office space into classroom	\$ 350,000	
5.		X		Restrooms - not accessible Add (2) new ADA stalls near existing restrooms	\$ 200,000	Complete renovation of each restroom and adjacent space

ELC Summary:

Urgent		None
Required	\$	210,000
Recommended	\$	382,000

05/ REVIEW PROCESS

ENROLLMENT HISTORY

Grade	<u>2012-2013</u>	<u>2013-2014</u>	<u>2014-2015</u>	<u>2015-2016</u>	<u>2016-2017</u>	<u>2017-18</u>	<u>2018-19</u>	<u>2019-20</u>	<u>2020-21</u>	<u>2021-22</u>	<u>2022-23</u>
K4	0	62	57	64	57	71	57	56	59	52	48
KG	89	92	97	65	77	65	72	61	52	72	56
1	84	93	88	82	66	70	61	71	63	58	85
2	73	77	84	80	86	70	61	68	66	66	60
3	85	75	73	82	77	87	67	68	66	70	69
4	97	89	72	73	89	76	87	70	61	70	70
5	95	93	89	71	76	91	80	91	66	69	81
6	93	104	108	100	88	85	97	87	89	78	72
7	100	93	100	105	97	92	86	105	88	93	76
8	113	96	85	102	103	100	94	91	103	100	85
9	113	120	104	89	120	111	109	100	97	104	105
10	111	117	123	104	92	123	112	105	90	90	100
11	117	113	110	123	105	88	113	109	107	95	89
12	109	105	114	105	122	109	93	109	112	106	93
Other	0	0	0	0	0	0	0	0	0	0	12
Total	1279	1329	1304	1245	1255	1238	1189	1191	1119	1123	1101

05/ REVIEW PROCESS

OPEN ENROLLMENT HISTORY

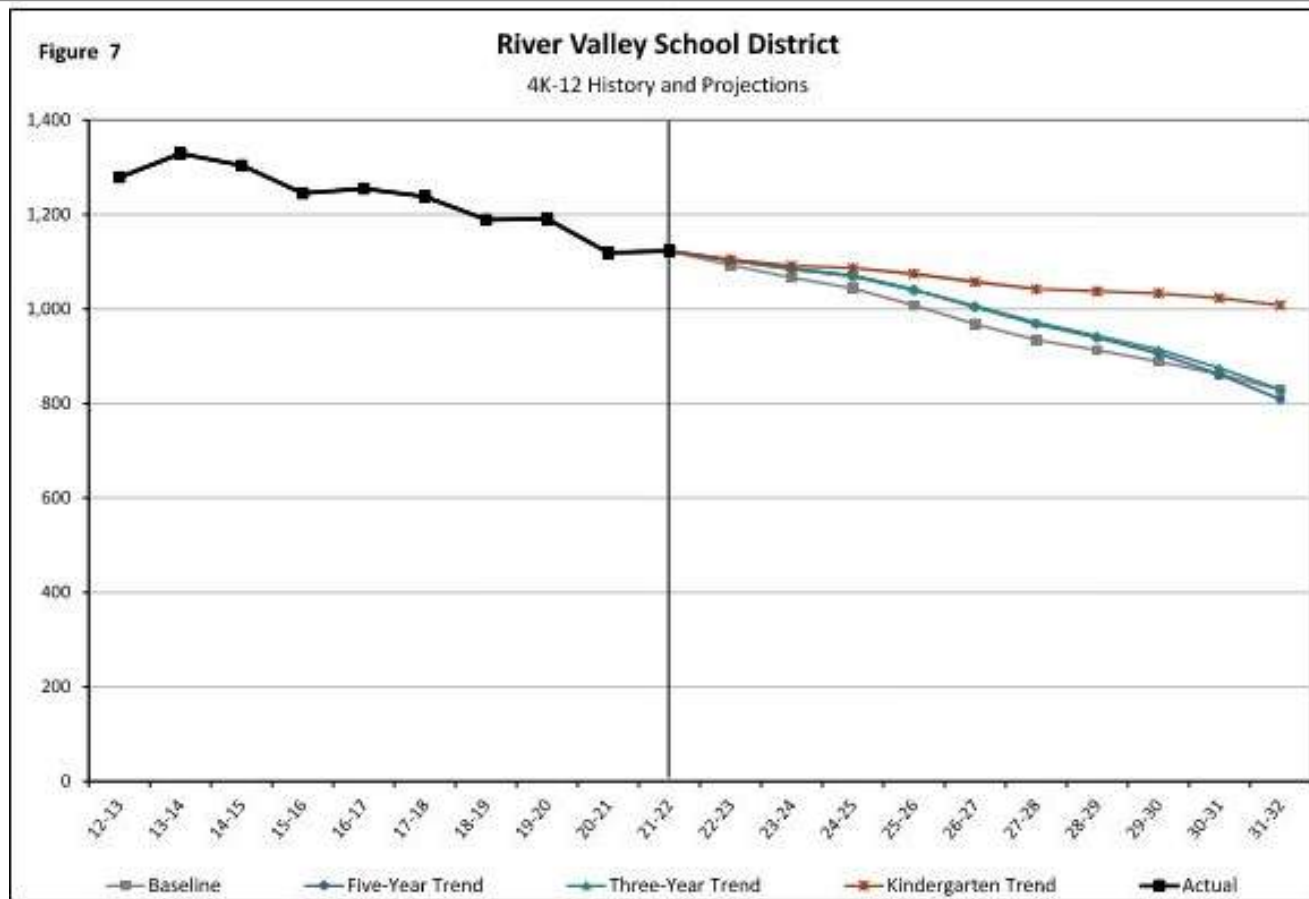
School Year				Net Change by Grade Groupings		
	In	Out	Net	1-4	5-8	9-12
2017-18	40	104	-64	-25	-9	-23
2018-19	49	118	-69	-19	-15	-23
2019-20	48	115	-67	-16	-13	-29
2020-21	43	139	-96	-29	-21	-33
2021-22	53	119	-66	-7	-23	-23

05 / REVIEW PROCESS

ENROLLMENT PROJECTIONS

	SCHOOL YEAR									
	22-23	23-24	24-25	25-26	26-27	27-28	28-29	29-30	30-31	31-32
4K	50	46	46	47	47	46	44	43	42	41
K	61	57	52	52	54	54	52	51	49	48
1	71	60	56	51	51	53	53	51	50	49
2	56	69	58	55	50	50	52	51	50	49
3	65	55	67	57	54	49	49	51	50	49
4	71	66	56	68	58	54	50	50	52	51
5	72	73	67	57	70	59	56	51	51	53
6	77	80	81	75	64	78	66	62	57	57
7	79	78	81	83	76	65	80	67	63	58
8	94	80	79	82	83	77	66	80	67	64
9	107	100	85	84	88	89	82	70	86	72
10	105	108	102	86	86	89	90	83	71	87
11	91	105	108	101	86	85	89	90	83	71
12	95	90	104	107	101	86	85	88	89	83
TOTAL	1,093	1,067	1,044	1,008	968	934	913	889	861	830
4K-K	111	103	98	99	101	99	97	94	91	89
1-4	263	249	238	231	213	207	203	203	202	197
5-8	322	311	309	297	294	280	267	260	238	231
9-12	398	404	399	379	360	349	346	332	329	313

05/ REVIEW PROCESS



05/ REVIEW PROCESS

TEACHER TO STUDENT RATIOS AND PROJECTIONS – EARLY LEARNING CENTER & ELEMENTARY

CURRENT 2022-2023 Enrollment - RV Early Learning Center & Elementary						
	EC/4K	5K	Grade 1	Grade 2	Grade 3	Grade 4
Students	53	57	82	61	67	71
Teaching Staff	4	4	4	3	3	3
Student:Teacher Ratio	13	14	21	20	22	24
<i>Early Learning Center Student Total</i>	<i>110</i>					
<i>Elementary Student Total</i>	<i>281</i>					
PROJECTED 2023-2024 Enrollment - RV Early Learning Center & Elementary						
	EC/4K	5K	Grade 1	Grade 2	Grade 3	Grade 4
Students	50	52	60	88	63	69
Teaching Staff	4	4	3	4	3	3
Student:Teacher Ratio	13	13	20	22	21	23
<i>Early Learning Center Student Total</i>	<i>102</i>					
<i>Elementary Student Total</i>	<i>280</i>					

05 / REVIEW PROCESS

TEACHER TO STUDENT RATIOS AND PROJECTIONS – MIDDLE SCHOOL

CURRENT 2022-2023 Enrollment - RV Middle School					
	Grade 5	Grade 6	Grade 7	Grade 8	
Students	85	71	75	82	313
English Language Arts	21	18	19	21	
Math	21	18	19	21	
Science	21	18	19	21	
Social Studies	21	18	19	21	
					Average Class Size
Agriculture				x	21
Art	x	x	x	x	20
Business Ed	x	x	x	x	20
Health		x			18
Music	x	x	x	x	27
Physical Education	x	x	x	x	20
Spanish			x		19
Technology Education			x	x	19

PROJECTED 2023-2024 Enrollment - RV Middle School					
	Grade 5	Grade 6	Grade 7	Grade 8	
Students	78	87	71	75	311
English Language Arts	20	22	18	19	
Math	20	22	18	19	
Science	20	22	18	19	
Social Studies	20	22	18	19	
					Average Class Size
Agriculture				x	21
Art	x	x	x	x	20
Business Ed	x	x	x	x	20
Health		x			18
Music	x	x	x	x	27
Physical Education	x	x	x	x	20
Spanish			x		18
Technology Education			x	x	19

05 / REVIEW PROCESS

TEACHER TO STUDENT RATIOS AND PROJECTIONS – HIGH SCHOOL

Updated: 1/26/2023

CURRENT 2022-2023 & PROJECTED 2023-2024 Enrollment - RV High School					
Current 2022-2023 Enrollment			Projected 2023-2024 Enrollment		
Grade 9	109		Grade 9	83	
Grade 10	99		Grade 10	109	
Grade 11	91		Grade 11	99	
Grade 12	93		Grade 12	91	
Total	392		Total	382	

**Information below does not include independent students
 **Courses Offered = Courses that ran in 2022-2023
 **Full course catalog is online here for 2023-2024 --> https://www.rvchsd.org/schools/high/Students/hs_course_and_class_info.php

ENGLISH					
		Avg. Class Size --> 19		4 credits required for Graduation; 10.5 Elective credits required for Graduation	
Courses Offered (11)	English 9	English 10	Film Studies	Creative Writing	Myths, Epics, & Legends
	Public Speaking	AP Literature & Composition	Literature & Composition	Strategies for Success	Language & Composition
				AP Language & Composition	AP Language & Composition
MATH					
		Avg. Class Size --> 19		3 credits required for Graduation; 10.5 Elective credits required for Graduation	
Courses Offered (11)	Algebra 1	Algebra 2	Algebra 1A	Algebra 1B	Algebra 1A/1B
	Colleg Prep Algebra	Math 1	Precalculus	AP Statistics	AP Calculus
				AP Calculus	Geometry
SCIENCE					
		Avg. Class Size --> 20		3 credits required for Graduation; 10.5 Elective credits required for Graduation	
Courses Offered (6)	Chemistry	AP Environmental Science	Biology	Physics	Applied Chemistry/Physics
	Earth & Space Science				
SOCIAL STUDIES					
		Avg. Class Size --> 22		3 credits required for Graduation; 10.5 Elective credits required for Graduation	
Courses Offered (10)	Law	American Ethnic Studies	Psychology	Government, Politics & Elections	
	World History	US History	AP US History	Psychology of Fear	Current Events
				World Studies	
PHYS. ED. & HEALTH					
		Avg. Class Size --> 24		1.5 Physical Education credits, 0.5 Health credits, 10.5 elective credits required for Graduation	
Courses Offered (7)	Lifetime Wellness 1	Lifetime Wellness 2	Lifetime Wellness 3	Health	Personal Fitness
	First Aid & Safety	Fitness Games			
BUSINESS					
		Avg. Class Size --> 14		0.5 credit Financial Literacy credit and 10.5 Elective credits required for Graduation	
Courses Offered (9)	Computer Business Applications	Accounting 1	Accounting 2	Accounting 3	Youth Apprenticeship
	Video Game Design	Financial Literacy	Personal Finance	Business Concepts	
AGRICULTURE & NATURAL RESOURCES					
		Avg. Class Size --> 17		10.5 elective credits required for Graduation	

05/ REVIEW PROCESS

TEACHER TO STUDENT RATIOS AND PROJECTIONS – HIGH SCHOOL CONT.

Courses Offered (8)	Agribusiness	Plant Science/Greenhouse	Animal Health & Nutrition	Aquaculture	Youth Apprenticeship
	Small Animal Science	Large Animal Science	Food Science		
ART	Avg. Class Size -->	17	10.5 elective credits required for Graduation		
Courses Offered (10)	2D Studio Arts 1	Drawing	3D Studio Art 1	Ceramics	AP Studio Art
	2D Studio Arts 2	Honors Art	Photography	Art Survey 1	Art Survey 2
MUSIC	Avg. Class Size -->	34	10.5 elective credits required for Graduation		
Courses Offered (7)	Service Learning	Concert Band	Symphonic Band	Tenor/Bass Choir	Soprano/Alto Choir
	Mixed Choir	AP Music Theory			
WORLD LANGUAGE	Avg. Class Size -->	19	10.5 elective credits required for Graduation		
Courses Offered (5)	Spanish 1	Spanish 2	Spanish 3	Spanish 4	Spanish 5
TECHNOLOGY ED.	Avg. Class Size -->	15	10.5 elective credits required for Graduation		
Courses Offered (13)	Welding 1 & 2	Transportation	Basic Gas Metal Arc Welding	Auto Technology	Building Construction
Youth Apprenticeship	Woodworking	Robotics Technology	Consumer Auto	Electronics	Fabrication Technology
Basic Shielded Metal Arc Welding		Auto Mechanics for the Non Mechanic			
Online Classes Offered through an Online Platform/Instructor					
	Advertising & Sales Promotion		Health Science 1: The Whole Individual		
	Early Childhood Education		Health Science 2: Patient Care & Medical Services		
	Health Careers 1		Medical Terminology		
	Women's Studies				

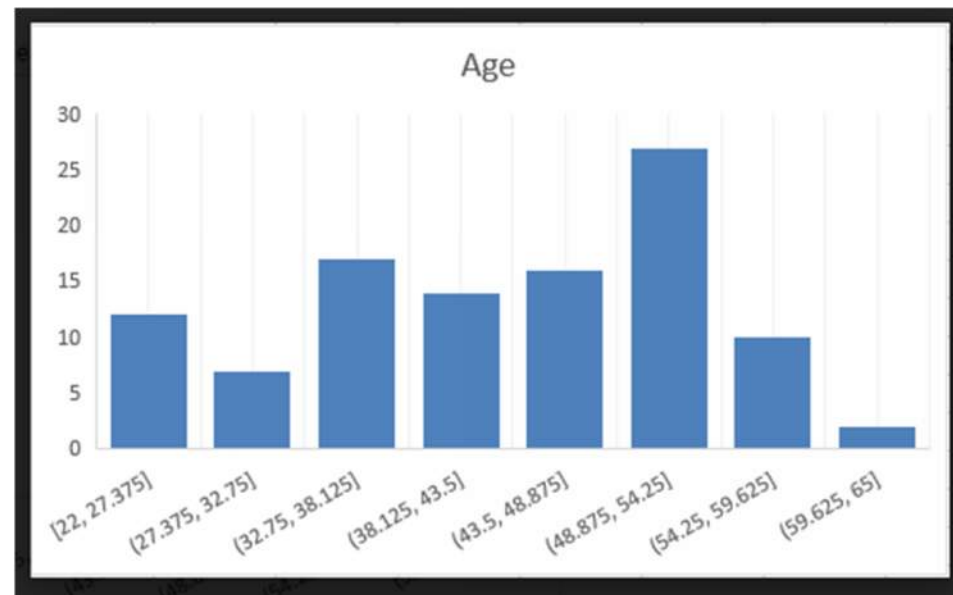
05/ REVIEW PROCESS

Staff Retention

	2013-2014	2014-2015	2015-2016	2016-2017	2017-2018	2018-2019	2019-2020	2020-2021	2021-2022	2022-2023
New Teachers	8	6	5	14	2	7	9	6	6	16
New Support Staff	7	1	5	2	2	1	6	4	7	14
New Non Union & Administration	1	3	2	0	1	2	1	2	2	0
Turnover Rate Teachers	7%	5%	4%	12%	2%	7%	8%	6%	6%	15%
Turnover Rate Support Staff	13%	2%	9%	4%	4%	2%	11%	8%	13%	26%
Turnover Rate Non Union & Administration	6%	19%	13%	0%	6%	13%	6%	13%	13%	0%

Note: Support Staff includes Teacher Aides, Food Service, Secretaries
 Note: Non Union includes Central Office Staff, Nursing Staff, IT, Psychologist

Age of Staff



05/ REVIEW PROCESS

Fund Balance

	Fall 2008	Fall 2009	Fall 2010	Fall 2011	Fall 2012	Fall 2013	Fall 2014	Fall 2015
Total Levy	\$ 7,814,687	\$ 9,013,033	\$ 9,000,042	\$ 8,749,914	\$ 9,058,377	\$ 9,329,011	\$ 9,251,320	\$ 9,339,745
Total Equalized Value	\$ 893,764,733	\$ 897,448,128	\$ 866,869,682	\$ 855,010,024	\$ 847,341,623	\$ 833,650,138	\$ 827,683,583	\$ 866,449,092
Equalized Rate	\$ 8.74	\$ 10.04	\$ 10.38	\$ 10.23	\$ 10.69	\$ 11.19	\$ 11.18	\$ 10.78

	Fall 2016	Fall 2017	Fall 2018	Fall 2019	Fall 2020	Fall 2021	Fall 2022	Fall 2023
Total Levy	\$ 9,491,431	\$ 9,154,892	\$ 8,971,993	\$ 9,653,154	\$ 9,792,485	\$ 10,348,680	\$ 10,072,147	
Total Equalized Value	\$ 884,845,950	\$ 911,441,102	\$ 923,607,299	\$ 956,501,912	\$ 1,015,290,457	\$ 1,102,921,350	\$ 1,251,859,633	
Equalized Rate	\$ 10.73	\$ 10.04	\$ 9.71	\$ 10.09	\$ 9.65	\$ 9.38	\$ 8.05	

Revenue Limit Breakdown State Aid and Property Taxes

	2013	2014	2015	2016	2017	2018	2019	2020	2021	2022	2023
State Aid	\$ 5,362,202	\$ 4,997,580	\$ 5,645,659	\$ 5,560,313	\$ 4,909,790	\$ 4,939,467	\$ 5,222,836	\$ 5,352,937	\$ 5,784,007	\$ 5,743,873	\$ 5,517,988
Property Tax	\$ 8,245,343	\$ 8,515,847	\$ 8,439,174	\$ 8,602,130	\$ 9,432,680	\$ 9,095,976	\$ 8,891,993	\$ 9,573,154	\$ 9,862,485	\$ 10,268,680	\$ 10,072,147
Total	\$ 13,607,545	\$ 13,513,427	\$ 14,084,833	\$ 14,162,443	\$ 14,342,470	\$ 14,035,443	\$ 14,114,829	\$ 14,926,091	\$ 15,646,492	\$ 16,012,553	\$ 15,590,135
State Aid %	39%	37%	40%	39%	34%	35%	37%	36%	37%	36%	35%
Property Tax %	61%	63%	60%	61%	66%	65%	63%	64%	63%	64%	65%

<https://youtu.be/EJyYhs57jHI?list=PL0oHOINDTg6OesHx0uf9kw87eYFOX1f4z>



WHAT IS YOUR VISION?

**WHAT WOULD YOU
LIKE US TO STUDY?**

Goals Based Criteria**Weighting**

[ENTER CRITERIA & FACTOR ON VOTING TAB ONLY NOT HERE]

Factor**1****2****3****4****5****6****7****Safety/security**

3.0

Energy effieency

2.6

Attract/retain

2.9

Adaptability/versatility

2.6

Positive student impact

3.0

Positive staff impact

2.9

shared resources

2.1

Accessibility

2.9

Feasible/possible

2.4

Capital cost

2.0

Operating cost

2.7

DECISION MAKING CRITERIA

Creating decision making criteria is critical in bringing everyone to a consensus among the options.

THE FEH DESIGN SPARK SESSION

It is a **F**ast-paced, **E**ngaging, **H**ighly-focused **D**esign Session.



FAST-PACED

In a 1 or 2 day session we create concept drawings in a short span of time based on your ideas. These concepts are then presented creating awareness and enthusiasm.



ENGAGING

Input comes from your selected committee or from the collective thoughts of your entire community or business. Having a broad base of support, reflects the needs and desires of the community, school or business, and develops built-in ownership.



HIGHLY-FOCUSED

Our team of designers set up shop in your space with their design toolkits. There, we focus all our attention on listening and responding to your suggestions. We bring our tools, our creativity but no preconceived notions as we work with you.



DESIGN

Through the Spark Session, multiple design concepts are created. During the day we step back, reflect and then refine the designs. The best move forward and a concept moves to a more refined design.

SPARK SESSION

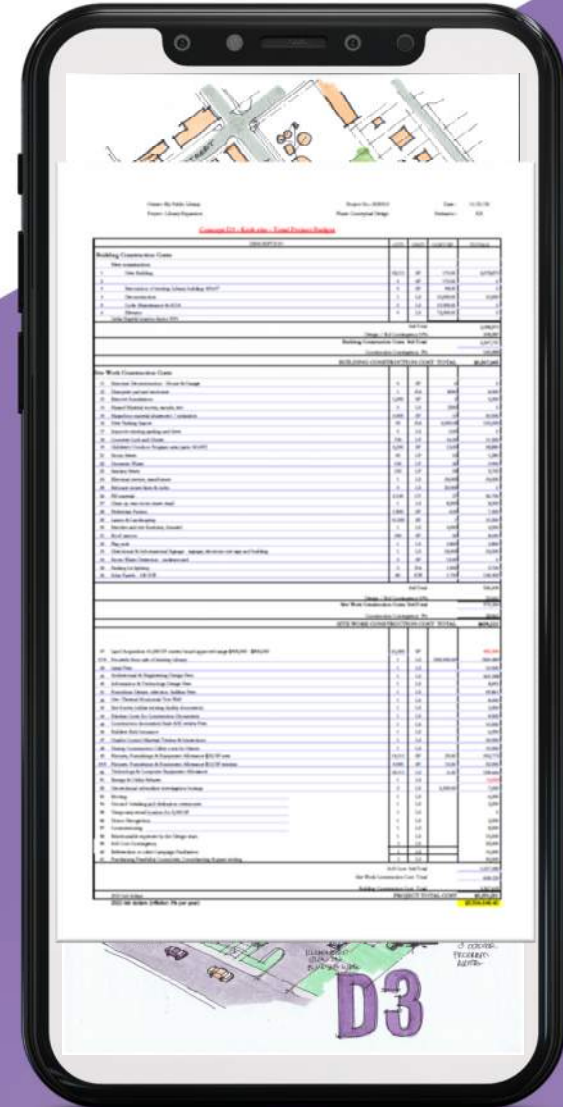
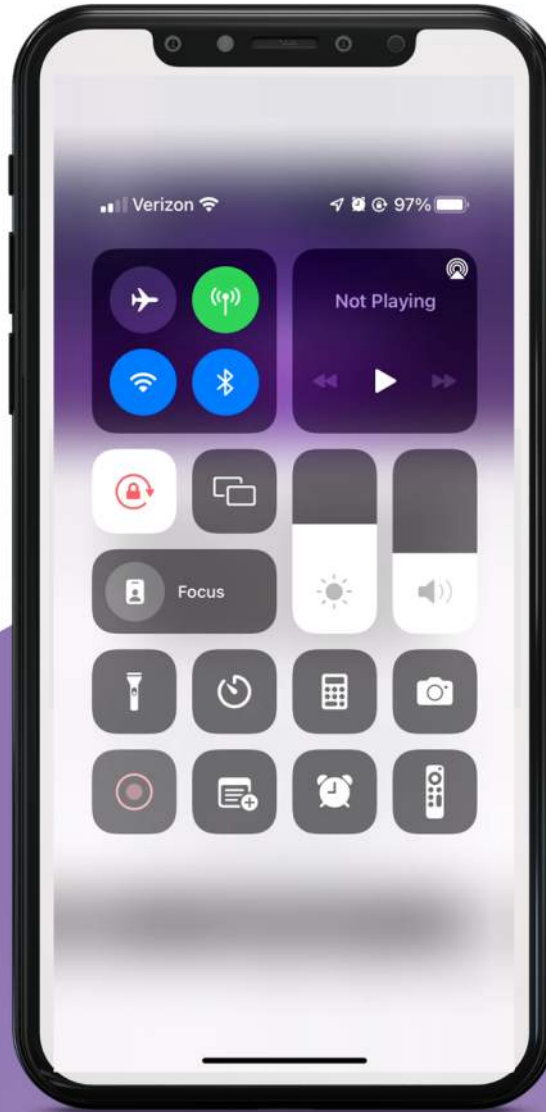
DELIVERABLES

- Master plan
- Floor plans
- Exterior hand renderings
- Cost opinions
- **Community Engagement!**



Check out our Spark Page!

- Open the camera app
- Place your camera over the QR Code
- Click the link & Explore



TOP 5 KEY TAKEAWAYS

1. Sessions can be in the community or held virtually
2. Utilizes an open public process
3. Focused on project development
4. Includes: site fit, floor plans and exterior design
5. A highly successful process generating design alongside stakeholders in an interactive manner



SPARKS IN ACTION





ADVANTAGES

- Facilitates collaborative design on visible projects that will have high impact on people's lives
- Brings project stakeholders together to facilitate fast and interactive decision making
- Especially useful for land-use planning or other issues that require speculation about the future
- Significantly shortens the schematic design phase, allowing you to move into fundraising sooner

SPARK DAY 1

Getting ideas on paper

“Big Idea” plans

Drop-in any time throughout the day

Two presentations – Noon and Evening

Vote on your top 2 preferred options





SPARK DAY 2

Refining options generated on Day 1 based on comments and votes from the evening meeting

Conceptual budgets and 3D perspectives

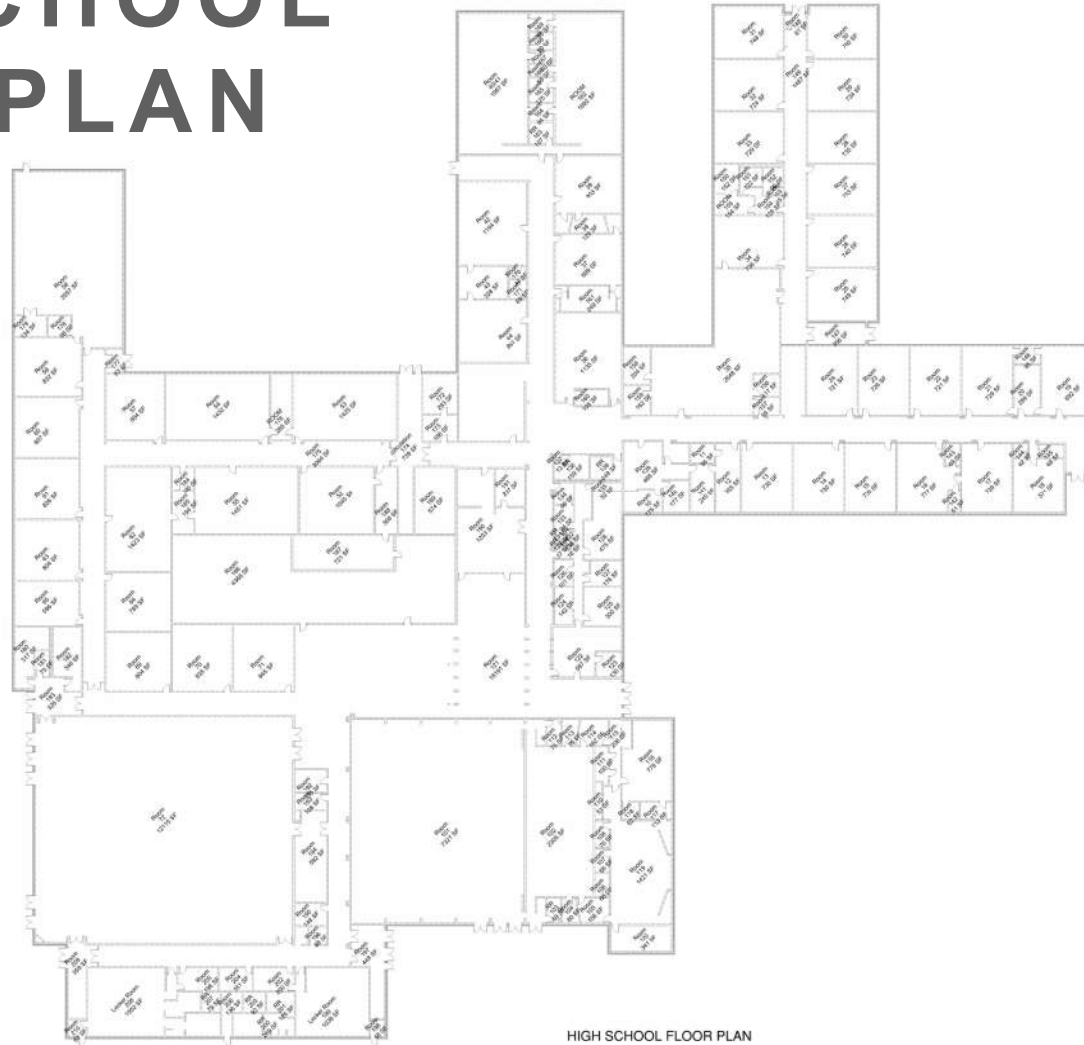
Two presentations – Noon and Evening

Vote on your preferred option

06 / FLOOR & AERIAL SITE PLANS

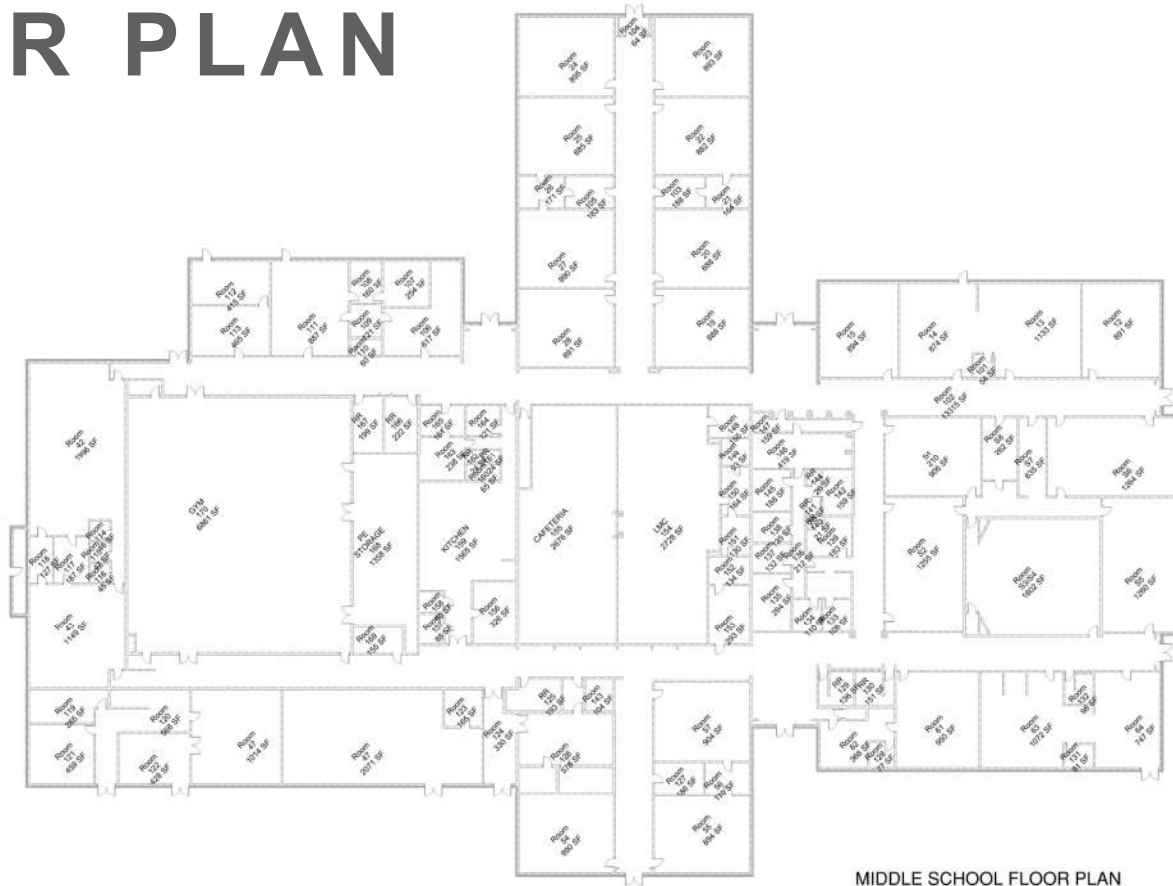


HIGH SCHOOL FLOOR PLAN



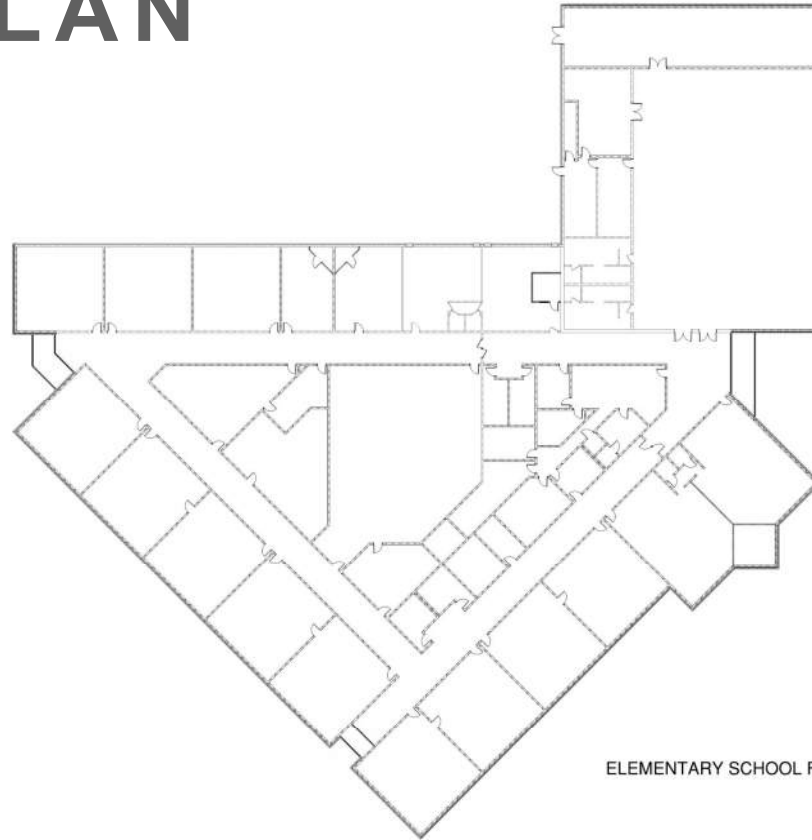
HIGH SCHOOL FLOOR PLAN

MIDDLE SCHOOL FLOOR PLAN



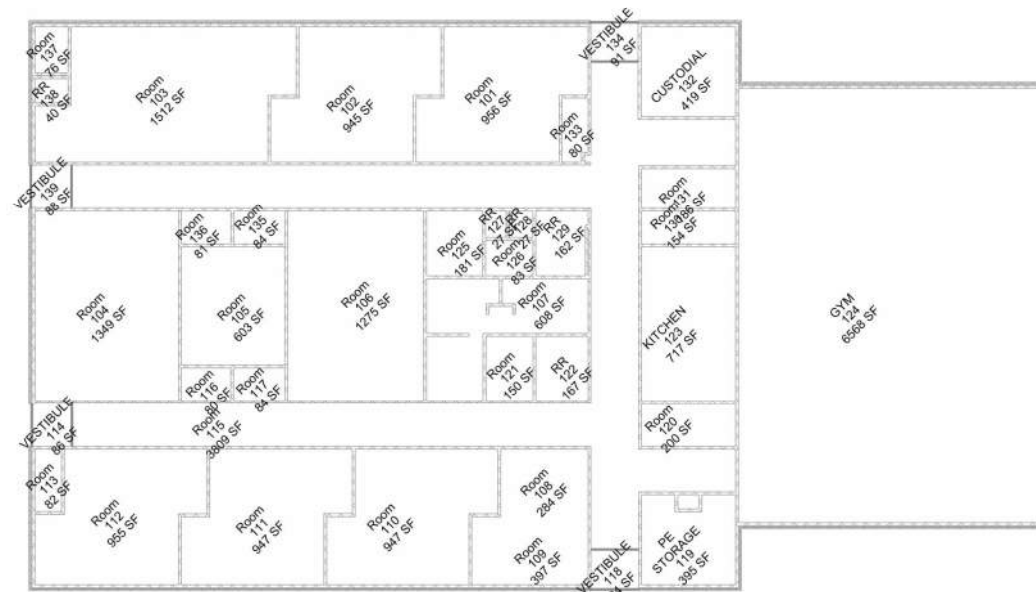
MIDDLE SCHOOL FLOOR PLAN

ELEMENTARY SCHOOL FLOOR PLAN



ELEMENTARY SCHOOL FLOOR PLAN

EARLY LEARNING CENTER FLOOR PLAN



EARLY ELEMENTARY FLOOR PLAN

07 / RELEVANCE OF 21ST CENTURY SCHOOLS



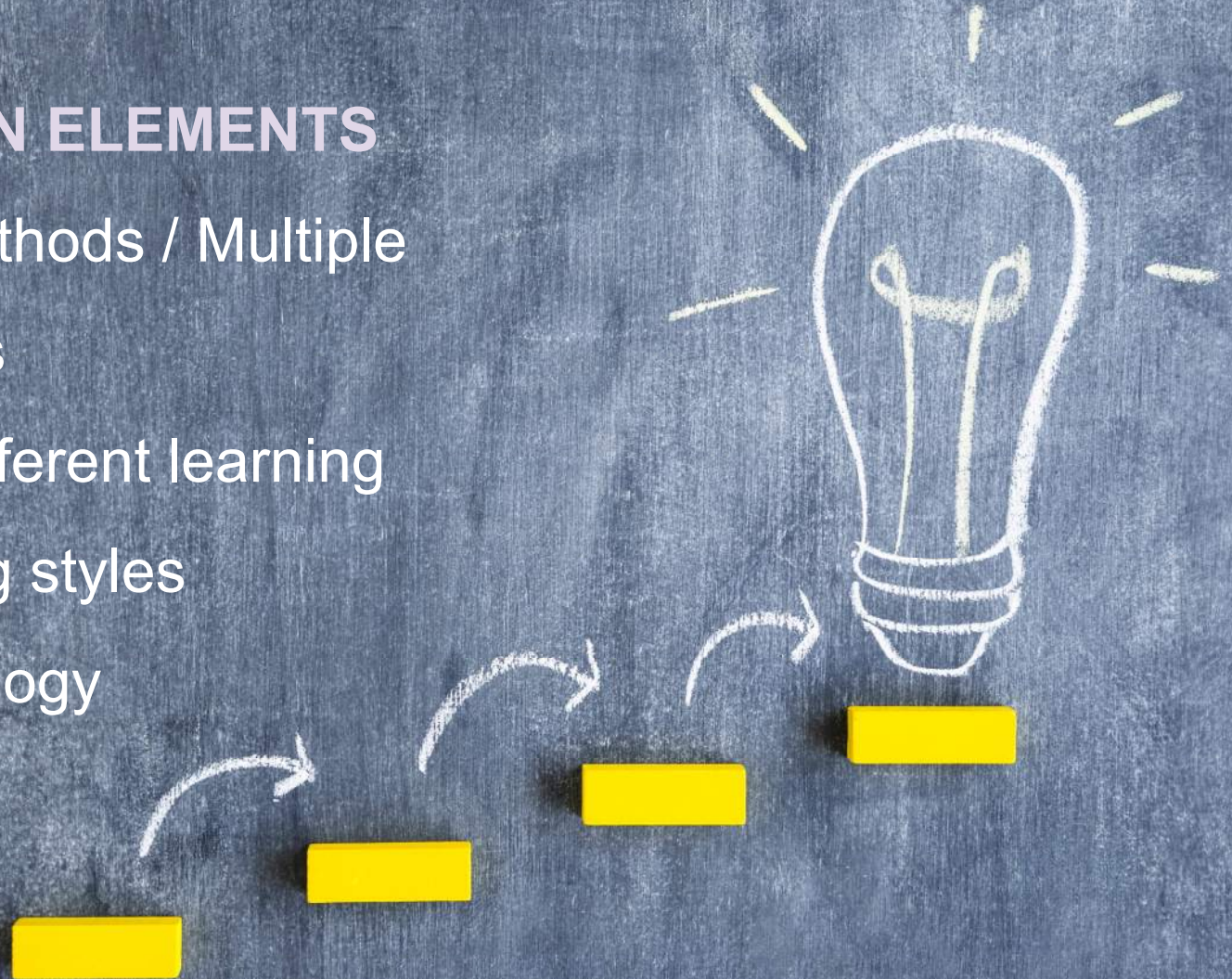
21ST CENTURY SCHOOLS

- Classroom Design for maximum flexibility that allow for continuous change
- Multi-use spaces, collaboration spaces, community spaces
- Design to minimize operating costs
- Staff and student collaboration
- STEM / STEAM – Career Technologies
- Technology rich spaces / smart boards
- Green design and environmental sustainability
- Student centered
- Safe and Secure learning environments



3 KEY EDUCATION ELEMENTS

- New teaching methods / Multiple teaching methods
- Recognition of different learning rates and learning styles
- Access to technology



EDUCATION TRENDS



5 KEY DESIGN ELEMENTS

- A flexible layout in walls, furnishings, and spaces
- Multi-use furniture creating infinite combinations
- Technology Integration and interaction
- Natural light in all environments
- Staff Buy-In





LEARNING

- Students experiencing a real-world environment
- Developing critical thinking skills
- Developing effective communications skills
- Introducing / developing skills using technology
- Project learning / learn by doing
- Active learning by working in groups

CLASSROOMS

- Flexible
- Technology infused
- Productive environment
- More space
- Connections to adjoining classrooms

FURNITURE

- Multiple types
- Easily reconfigured
- Accommodate collaboration

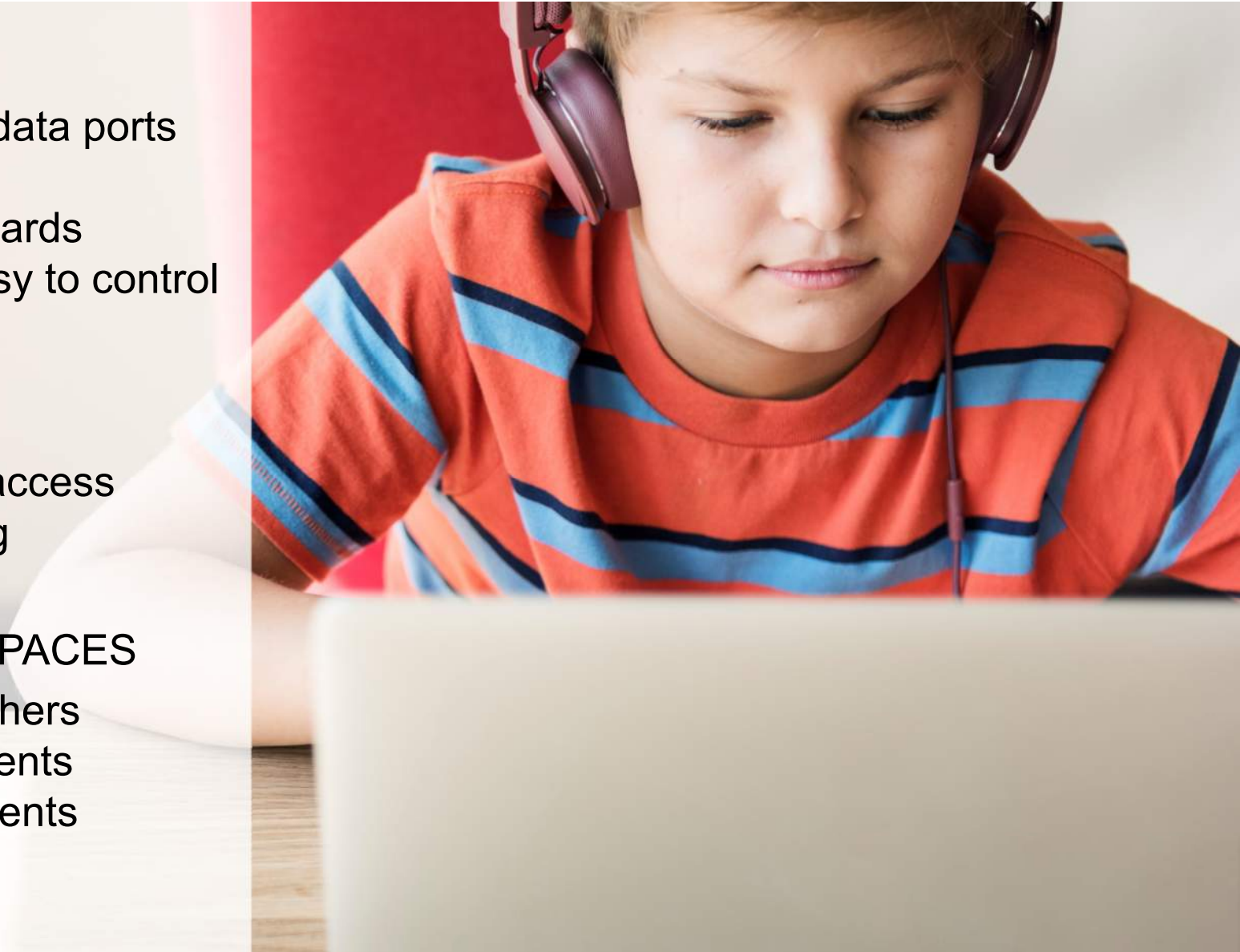
TECHNOLOGY

- Ample power and data ports
- Wireless internet
- Interactive whiteboards
- Lighting that is easy to control
- TV Monitors
- E Readers
- Podcasts
- Virtual classroom access
- Video conferencing

COLLABORATIVE SPACES

- Teachers with teachers
- Students with students
- Teachers with students

ACOUSTICS



08 / SCHEDULE

- Advisory Task Force Meeting #1 6:00 Today
- Advisory Task Force Meeting #2 6:00 Feb. 15
- Advisory Task Force Meeting #3 5:00 March 14
- Advisory Task Force Meeting #4 6:00 March 15
- Advisory Task Force Meeting #5 6:00 April 11



**THANK
YOU**